

P34 Cold Air Intake, B9 Audi S4/S5 3.0T**034 MOTORSPORT**

The P34 Cold Air Intake System offers measurable performance improvements, simple bolt-on installation, and unsurpassed OEM+ fit and finish.

Installation Spiciness Rating: MILD

Installation of your 034Motorsport P34 Cold Air Intake is a straightforward process that will take approximately 1 hour to complete.

Supplied Parts:

- P34 airbox assembly with 5" high-flow air filter, adapter ring and mounting feet
- Silicone turbo inlet hose
- 120mm hose clamp
- 60mm hose clamp

Tools Needed:

- T25 Torx bit
- 7mm socket or flathead screwdriver
- 6mm socket or flathead screwdriver

About This Guide

This Install Guide documents the installation process on a B9 Audi S4. There may be minor differences depending on specific vehicle, market, options, etc.

Getting Started

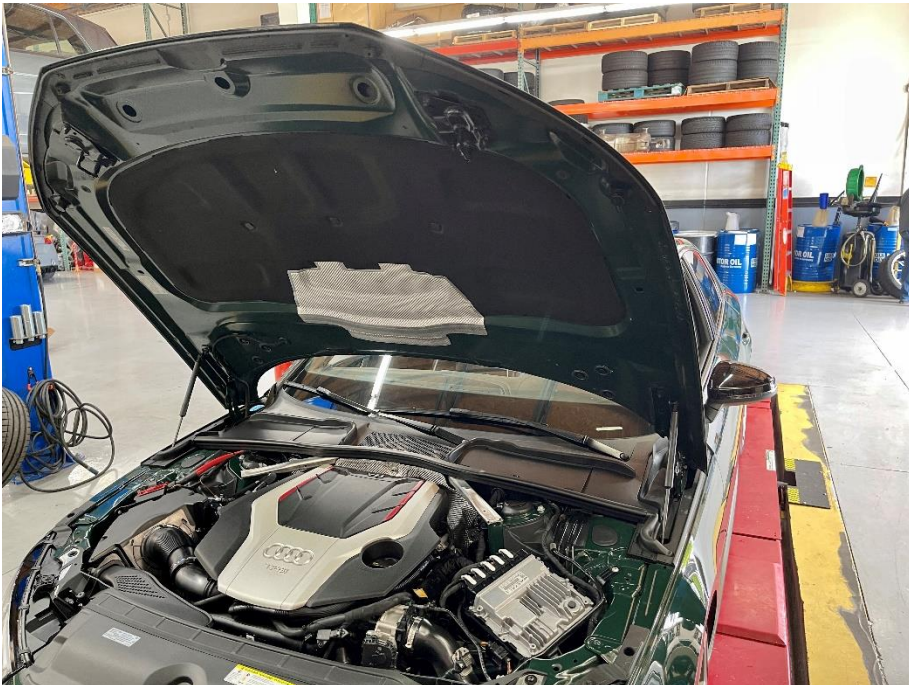
Confirm you have received all the parts included with your purchase by reading the complete guide, if there are missing components, please contact:

customerservice@034motorsport.com

Install Steps

Step 1

Open your hood to access the factory intake system.



Step 2

Remove hood release lever by pressing button on back side of lever and pulling the lever upward.



Step 3

Remove cover by gently prying up on front edge to release clips and slide forward and out.



Step 4

Using the T25 Torx bit, unscrew the two screws holding the factory air duct to the radiator support.



Step 5

Remove air duct.



Step 6

Remove the engine cover by pulling upward.



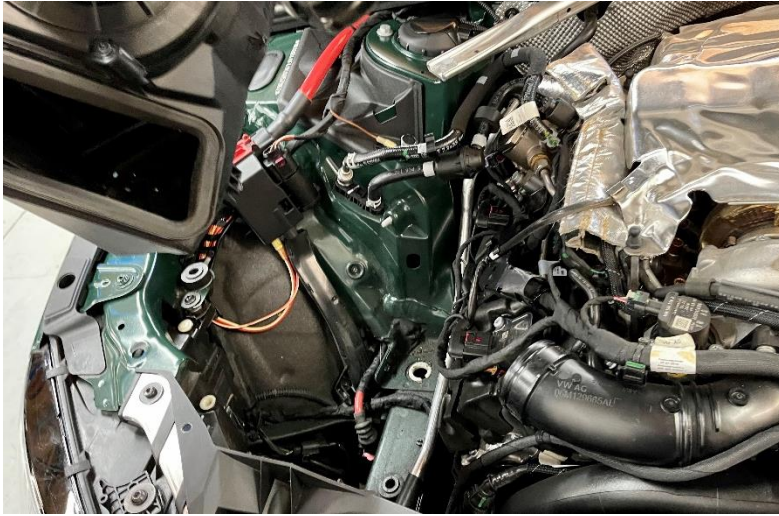
Step 7

Using a 6mm socket or flathead, loosen the hose clamp attaching the air filter hose to the turbo inlet pipe.



Step 8

Remove the airbox from the car by simply lifting upward.



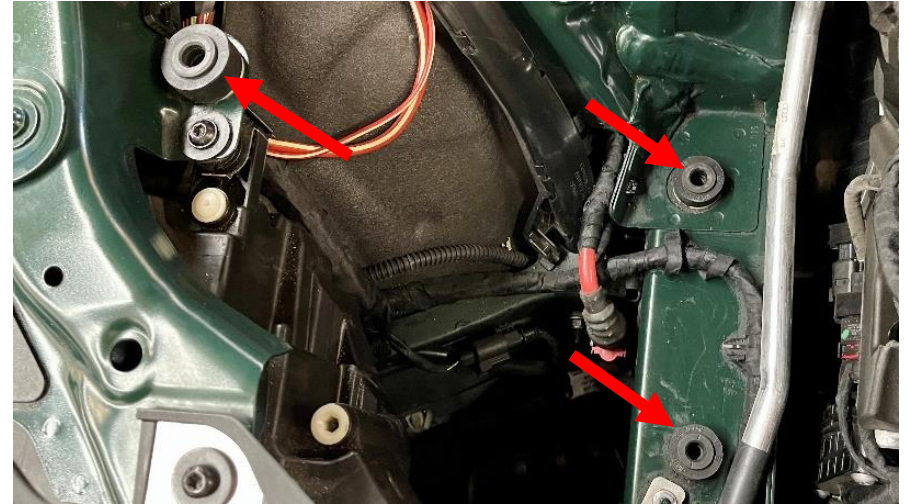
Step 9

Remove the three rubber mounts from the stock airbox.



Step 10

We found it easier to insert the mounts in the chassis holes.



Step 11

Attach the silicone hose to the airbox, using the 034 logo and the bolt head as reference to index the hose correctly.



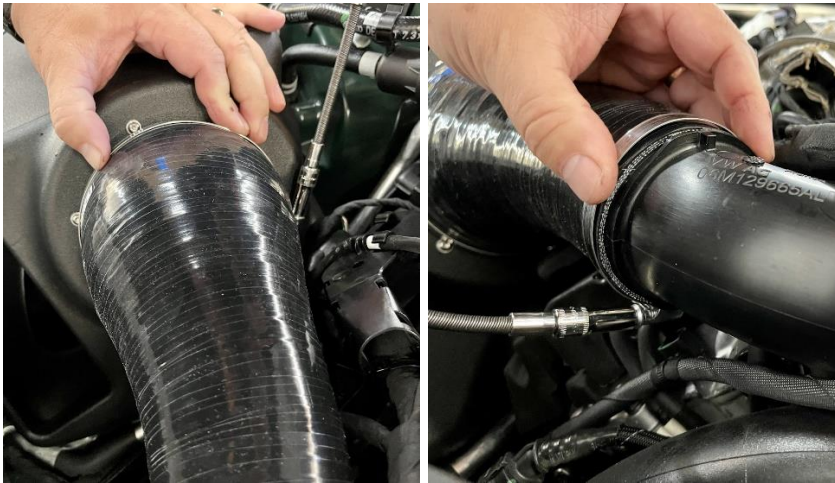
Step 12

Slide the silicone hose onto the turbo inlet pipe and push the airbox down into the rubber mounts from Step 10. Make sure the airbox/mounts are fully engaged.



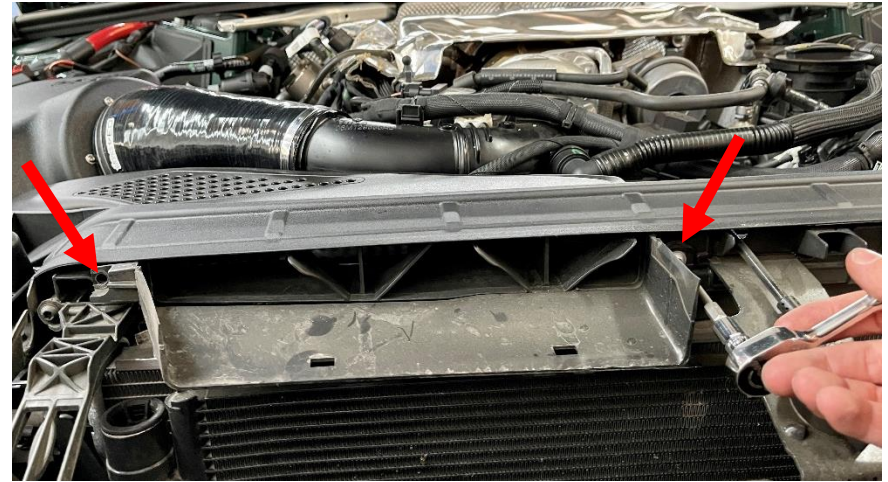
Step 13

Using a 7mm socket, tighten the hose clamps. Beware of crushing the plastic!



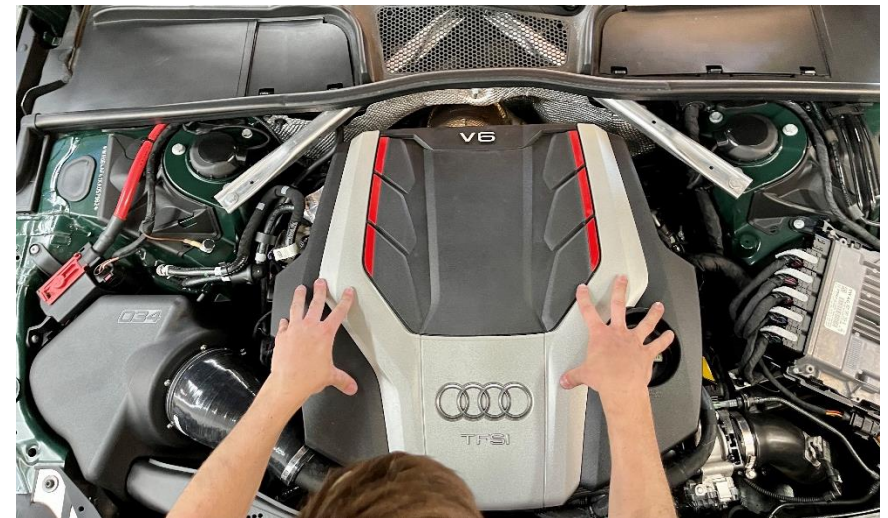
Step 14

Using a T25 Torx, reattach the air duct.



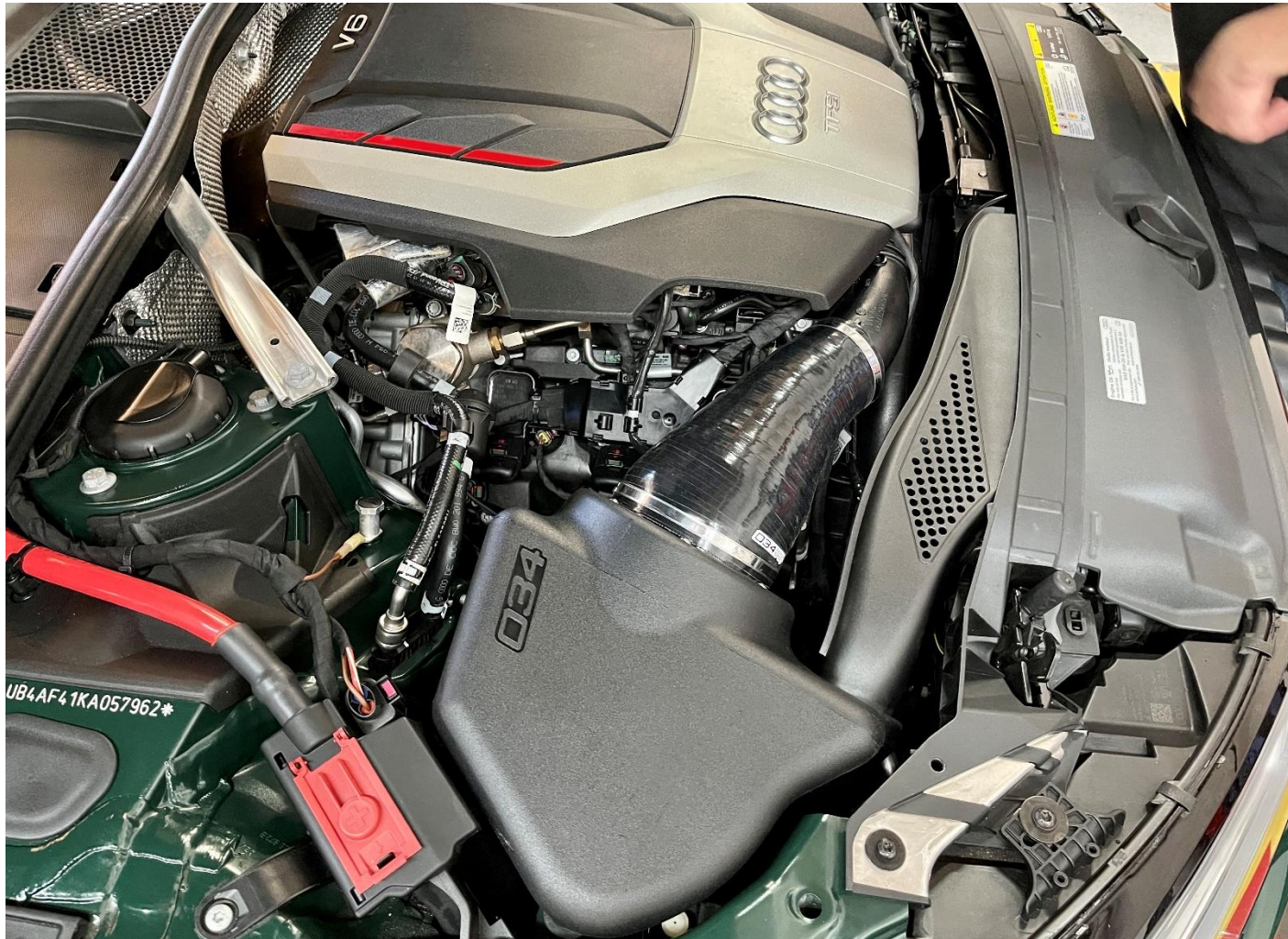
Step 15

Push the engine cover back into place.



Step 16

Put the radiator cover back into place and attach the hood lever.



Step 17

You are done! Enjoy those new intake swooshes.