



**FOR RACING USE ONLY**

## 2005-08 Porsche 997/997S Exhaust System

Congratulations on your purchase of the AWE Tuning Exhaust System for 2005-08 997/997S. Exquisite hand built quality with industry leading performance distinguishes this exhaust system from all others.

### Parts list for Mufflers:

- 2 exhaust muffler can (driver and passenger side specific)
- 2 tailpipe sections (driver and passenger side specific)
- 2 2.50" t-bolt band clamp
- 2 AWE Tuning exhaust tip with clamp (if ordered)

### Parts list for Header Sections:

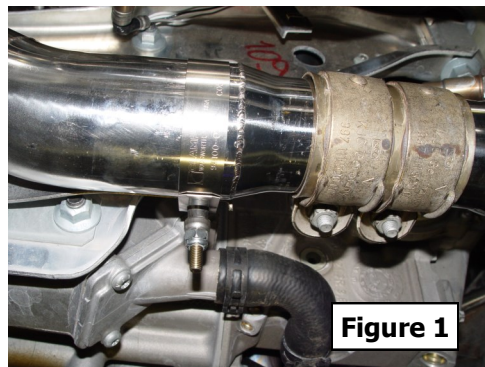
- 2 header sections (driver and passenger side specific)
- 2 catalytic converter to header gasket (only if headers are purchased separately from the catalytic converters)
- 2 header to head gasket

### Installation of this exhaust system is very straight forward.

Installation of this exhaust can be completed on jack stands or ramps. Never work under a vehicle only supported by a jack. If you do not feel comfortable installing this system yourself, contact a local professional for installation.

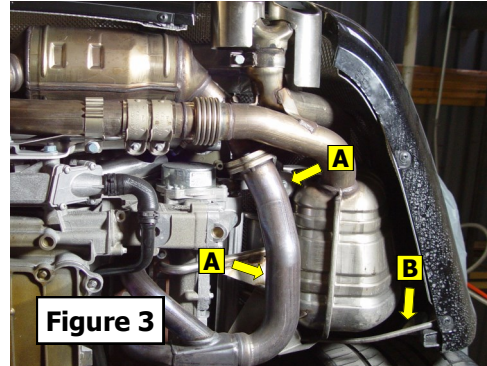
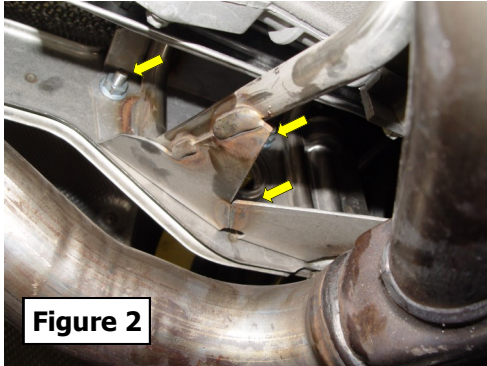
#### *Installation notes and tips:*

1. Supplied 2.50" t-bolt band clamps replace the OEM band clamps to hold the catalytic converter sections to their bracket. The factory sleeve clamp is reused between the catalytic converter sections and the mufflers. (Figure 1). Reuse the OEM nuts with supplied M8x1.25x30 bolts for the catalytic converter to header flange connection. When reinstalling oxygen sensors, gently pull to extend the wiring in order to reach the proper locations on the catalytic converter sections. Disconnect wiring from retainer clips in engine bay to obtain proper wire length.



**Figure 1**

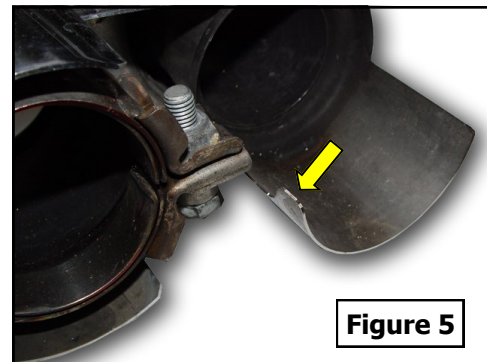
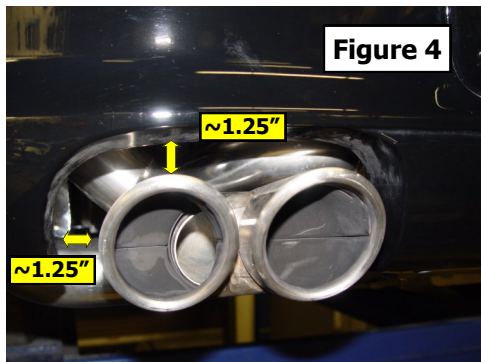
2. Remove the OEM mufflers by unbolting the three nuts holding their brackets to the engine (at arrows in Figure 2). Reinstall the brackets to the engine unattached to the muffler. When installing the AWE Tuning mufflers, install the vertical bolts (at arrows A in Figure 3) opposite from the factory direction, with the nuts at the top. This will make muffler installation easier.



3. Depending on factory build variance, there may be interference between the rear of the AWE Tuning mufflers and a bumper support brace (at arrow B in Figure 3). If there is contact, loosen the brace bolts and rotate the brace until clearance is gained.

4. On the 997S system, the OEM tips are reused if the AWE Tuning tips are not ordered.

5. The tailpipes exiting the mufflers are adjustable to ensure proper and even placement in the rear valance openings. By keeping hand tight the t-bolt band clamps where the tailpipes attach to the mufflers, as well as the exhaust tip bolts, you will be able to precisely adjust the exhaust tips before fully tightening the fasteners. There should be approximately 1.25" of clearance between the top and sides of the OEM tips and the bumper openings (See Figure 4). **On PSE Tip equipped cars:** slight bending of the tab at arrow in Figure 5 is necessary to clear the catalytic converters. Bend in direction of arrow in Figure 5.



**Please note that the tailpipe sections are side specific.** Decals on the tailpipes indicate their proper locations. Ensure that the tailpipes extend into the tips past the compression rings at the entrance of the tips. If the tailpipes do not extend deep enough into the tips, you will run the risk of the tips falling off during operation.

Any questions or comments, please do not hesitate to contact us:

**1-888-565-2257**

**AWE-Tuning.com**

**sales@awe-tuning.com**



**AWE Tuning**  
**199 Precision Drive**  
**Horsham, PA 19044**  
**215-658-1670**  
**sales@awe-tuning.com**

Thank you for choosing A.W.E. Tuning as your performance automotive parts supplier. Please remember that a performance car is only as strong as its weakest link. Therefore, it is vital that you maintain your vehicle to factory specifications.

**By installing or using the purchased product, the Consumer accepts this warranty and any specific Manufacturer warranties enclosed.**

### ***Limited Warranty***

The following warranty is valid only in the United States.

The Manufacturer's full warranty applies to all products sold.

Secor Ltd. (A.W.E. Tuning) warrants to the original retail purchaser (Consumer) the following products against defects for LIFETIME:

LIFETIME of system components

Upon verification of warranty coverage, A.W.E. Tuning will repair or replace the defective product at their discretion, without charge. This is the only remedy the Consumer has for any loss or damage, however arising, due to nonconformity in or defect of the product. This warranty does not cover consequential damage, loss of time or revenues, inconvenience, loss of use of vehicle, damage to the vehicle or components, or other incidental or indirect damage.

All warranties are void if the product was not installed by a certified auto mechanic, improperly serviced, modified, or used in a way not intended by the Manufacturer. Use of product in Motorsports or Racing conditions is grounds for warranty denial. Motorsports and Racing is an inherently abusive operational condition, and it is impossible to warranty for this type of usage.

The Consumer is responsible for ensuring that the product is installed in a safe and proper manner, and should cease usage of the product immediately if an unsafe or improper condition is noted. If an unsafe or improper condition is noted, the Consumer should then immediately contact the facility where the product was installed or A.W.E. Tuning directly.

Please contact the original place of purchase for any warranty claims or explanations of this document.