



1. The turbo tube can not be used with the stock airbox – please ensure you have our intake fitted already. Start by removing the breather pipe from the back of the tube.



2. Remove the screws from the breather block.



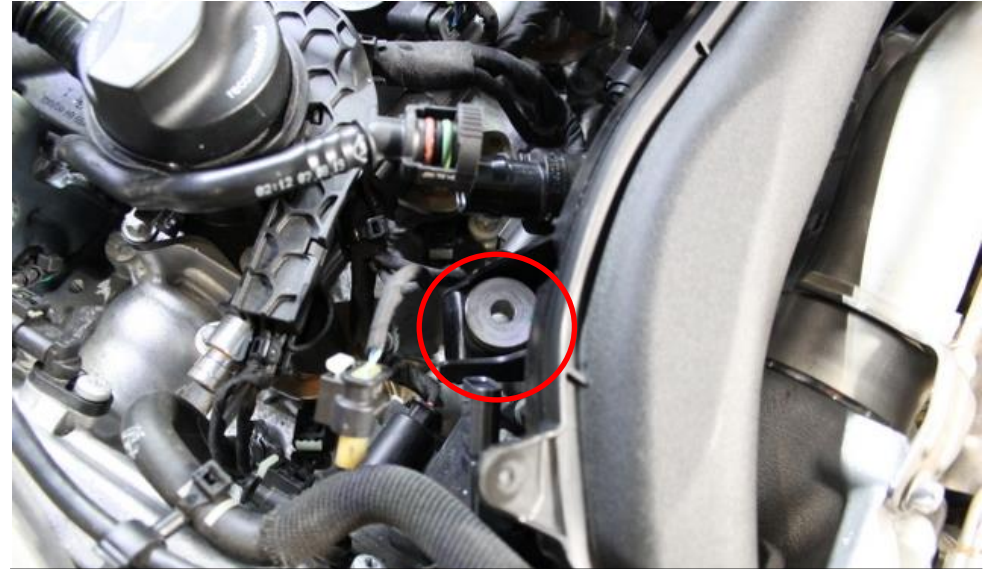
3. Remove the breather block from the tube.



4. Remove the remaining single breather pipe and unplug the MAP sensor plug.



5. Remove the bolt on the mount as shown.



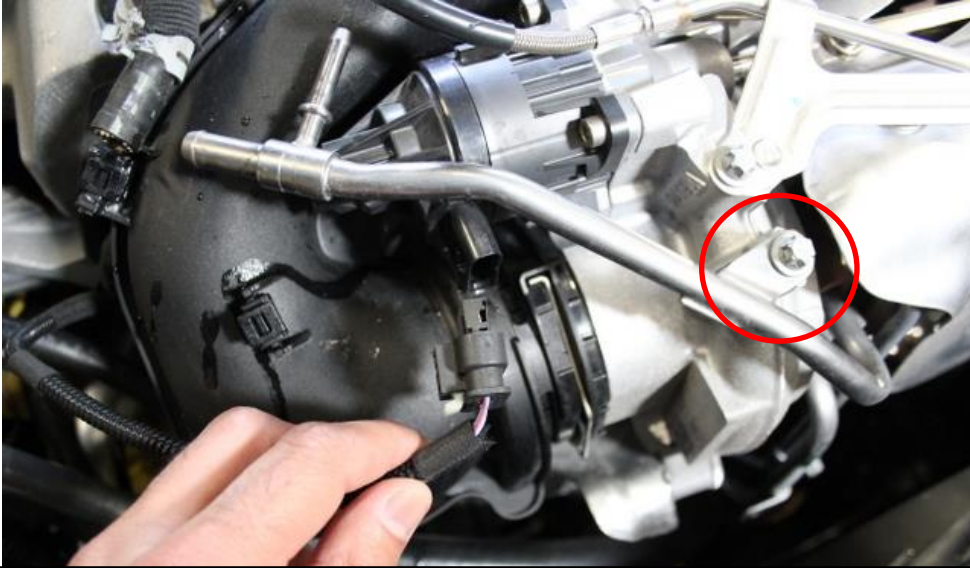
6. Remove the remaining bolt on the other side.



7. **MAKE SURE THE ENGINE IS COLD.** Release any pressure in the coolant system by removing the coolant cap.



8. Remove the coolant lines as shown.



9. Unplug the sensor plug. Also remove the circled bolt. This will give you some extra movement on the metal coolant pipe.



10. Pull this cable clip out for more space to remove the tube.



11. Pull the wire clip out which secures the tube to the turbo.



12. Remove the tube from the airbox side.



13. Put a cloth underneath the exposed metal coolant pipes to protect the tube.



14. Remove the tube from the turbo.



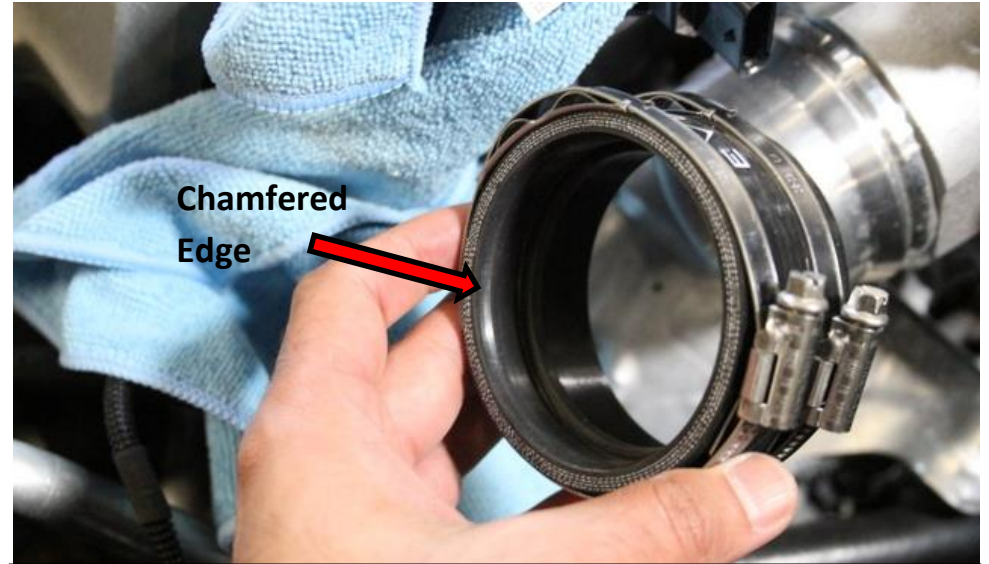
15. Carefully remove the tube from the engine bay.



16. Remove the MAP sensor by rotating it 90 degrees and pulling out. Also remove one of the rubber mounting grommets.



17. Install the MAP sensor and angle it as shown. Also install the rubber mount with the metal insert into the bracket.



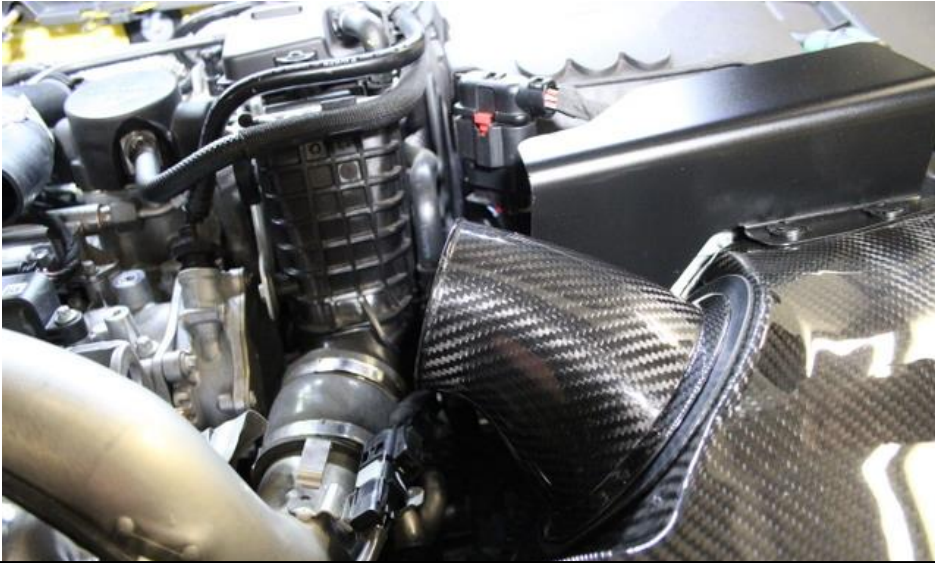
18. Take the small silicon coupler – the chamfered edge should face AWAY from the turbo.



19. Push the silicon onto the turbo – notice the position of the clamps. If you have an A250 please use the supplied reducer which has A250 marked on it.



20. Insert the larger silicon hose onto the airbox side of the tube as shown.



21. Remove the existing silicon on the intake tube.



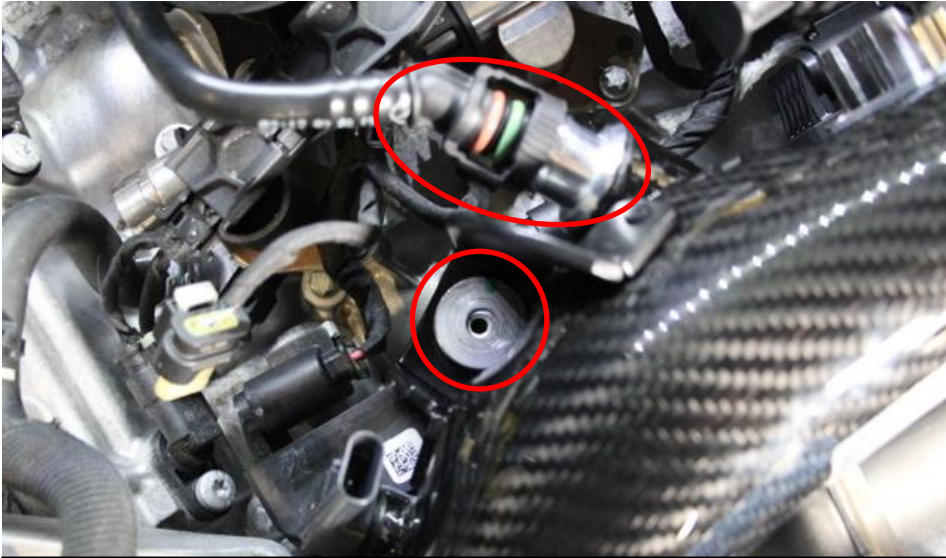
22. Carefully slide the tube into position – make sure the cloth is still covering the exposed metal coolant tubes.



23. Push the tube into the silicon as far as possible.



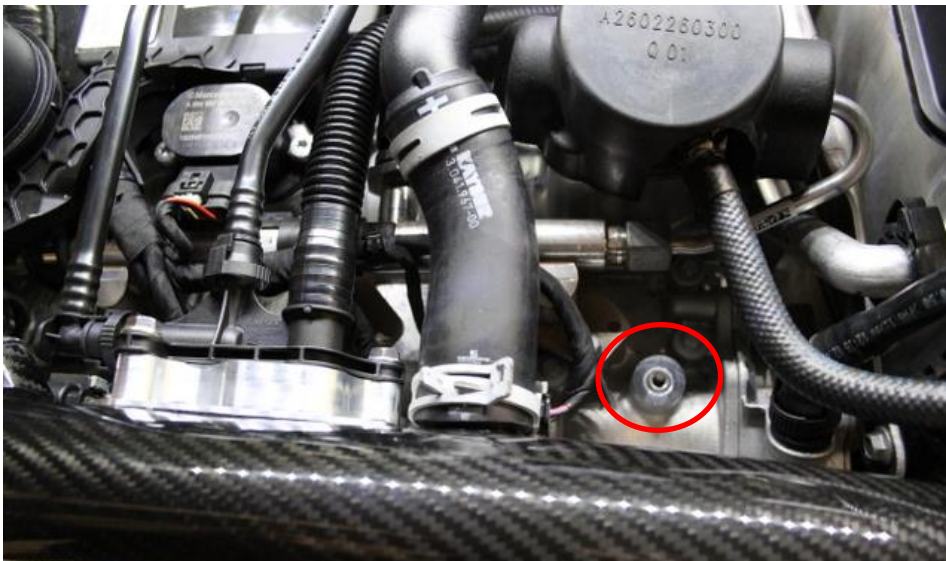
24. Push the other side onto the intake tube.



25. Line up the mount and secure it with the original bolt. Also push the breather onto the connector.



26. Push the breather block into the machined block and secure with the supplied M6 bolts.



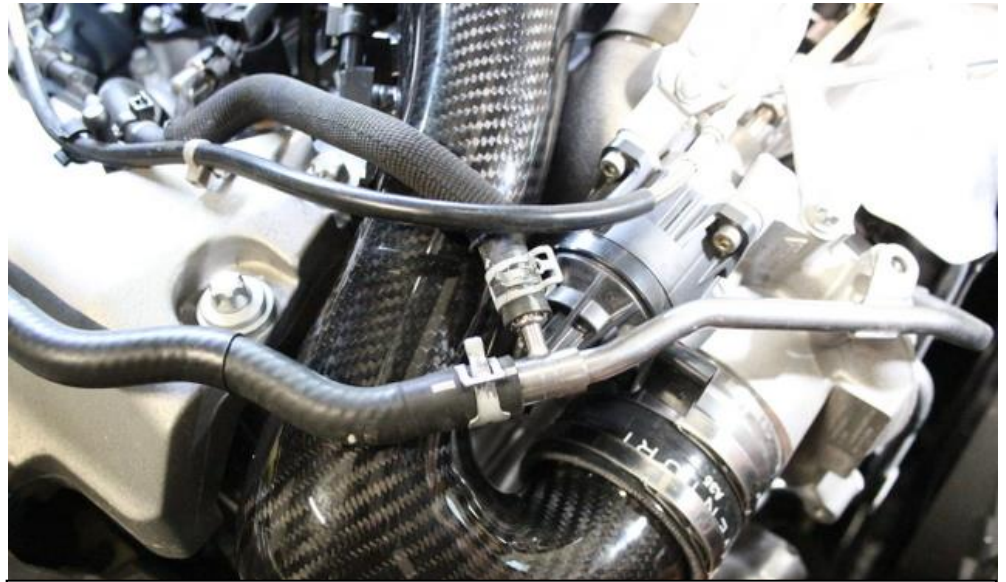
27. Put the large breather onto the tube and secure with the original spring clip. We will not re-install the original bolt on the circled area.



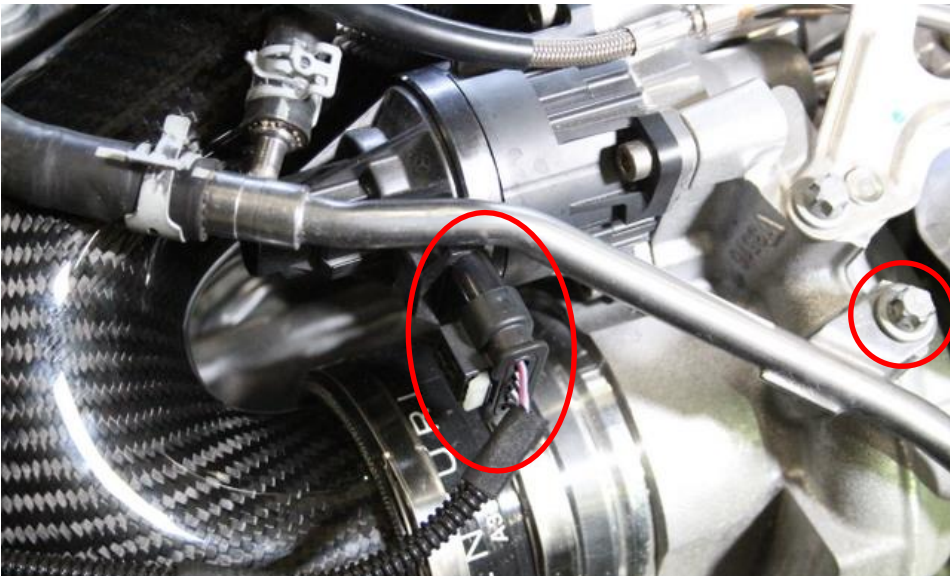
28. Remove the second rubber mount from the original tube.



29. Install the remaining original bolt on top of the rubber mount as shown.



30. Re-connect the coolant hoses and the clamps.



31. Install the securing screw removed previously. Also reconnect the sensor plug.



32. Reconnect the MAP sensor plug.



33. Secure the hose clamps.



34. Secure the hose clamps at the airbox side too. Make sure the intake tube is sitting flush against the airbox.



You have now completed the installation of the Eventuri A35S intake system.

Eventuri cannot take responsibility for an incorrectly installed intake or any damage caused during installation.