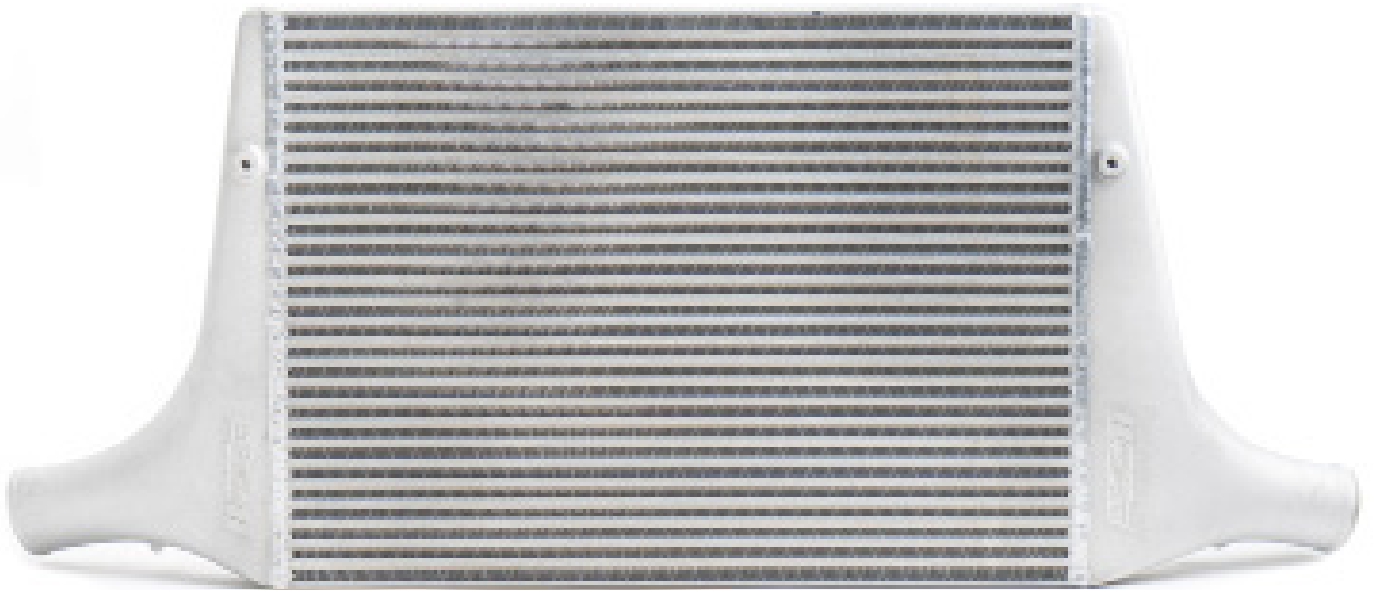




## INSTALLATION GUIDE

CTS Turbo B8 A4 FMIC  
CTS-B8-DF



**WHAT IS INCLUDED**

1. CTS Intercooler
2. Silicone hoses
3. Hardware

**TOOLS REQUIRED**

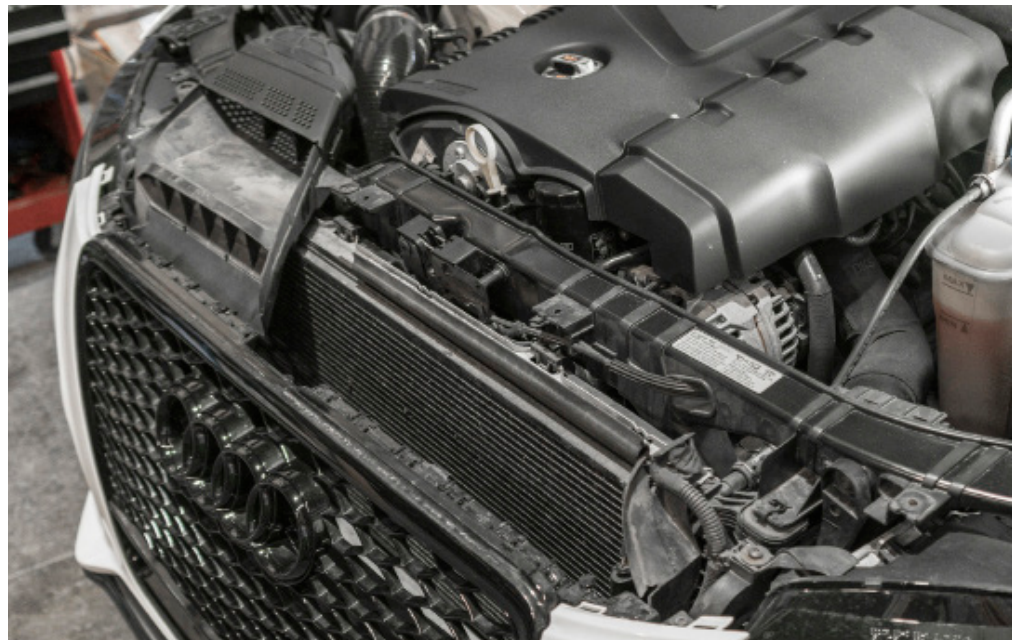
Basic Machanics tool set.

**NOTES**

Vehicle used in this guide is a 2011 Audi A4, Always make sure the car is safe to work on. Do not work on a hot motor. We do not accept any liability for incorrect installation or damage during the install.

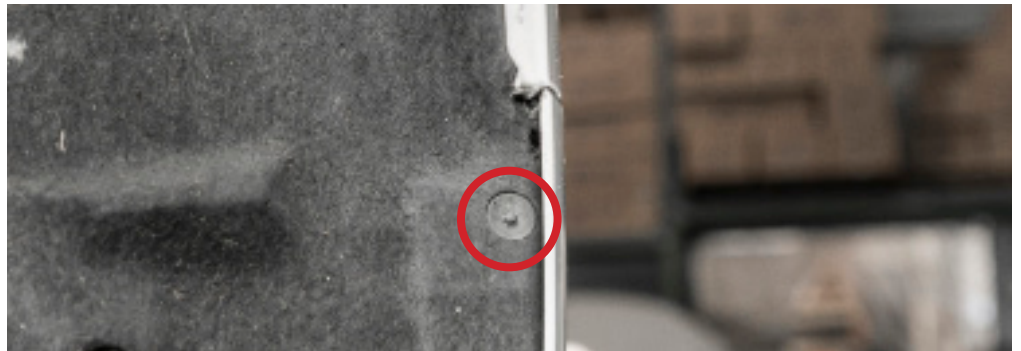
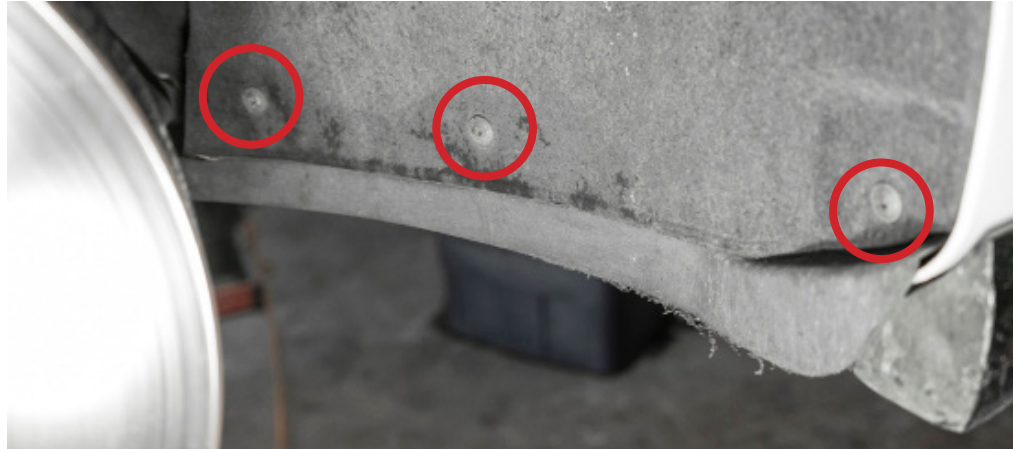
**STEP 1**

Remove the 4 torx screws holding the plastic bezel to the bumper and remove.



**STEP 2**

Remove 4 torx screws you on each wheel well.

**STEP 4**

There are electrical connections you need to disconnect on both sides of the vehicle.





**STEP 4 continued****STEP 5**

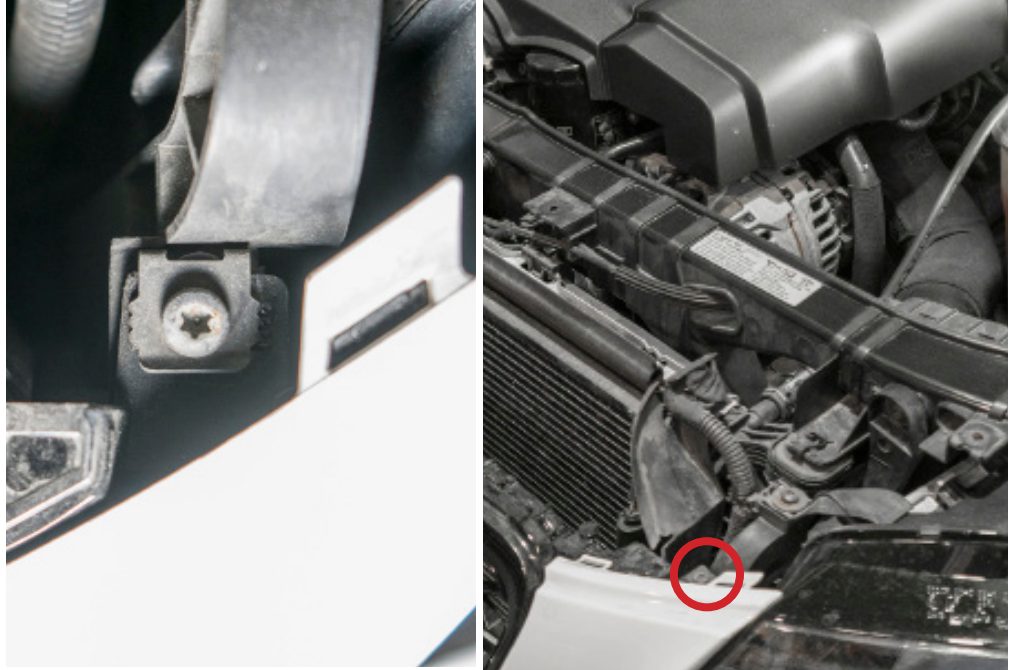
There is a plastic tab holding the a wiring harness to the bumper on passenger side.

Unclip it from the mounting point on the bumper.



**STEP 6**

Remove the torx bolt holding the bumper to the radiator support on the drivers side.

**STEP 7**

On the inside of the bumper on both sides there is a 10mm bolt you need to remove.

You will now be ready to remove the bumper.

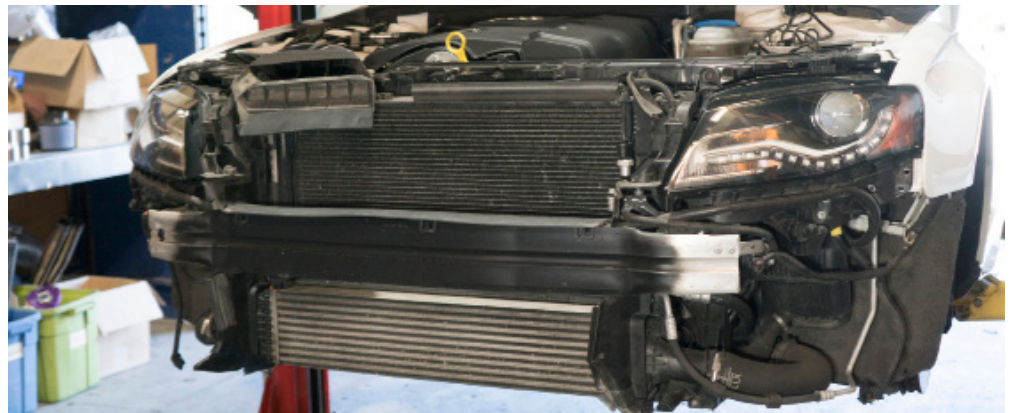




**STEP 8**

Remove the bumper.

We recommend you have a 2nd person to help with removal.

**STEP 9**

Disconnect the air temperature sensor attached to the crash bar.



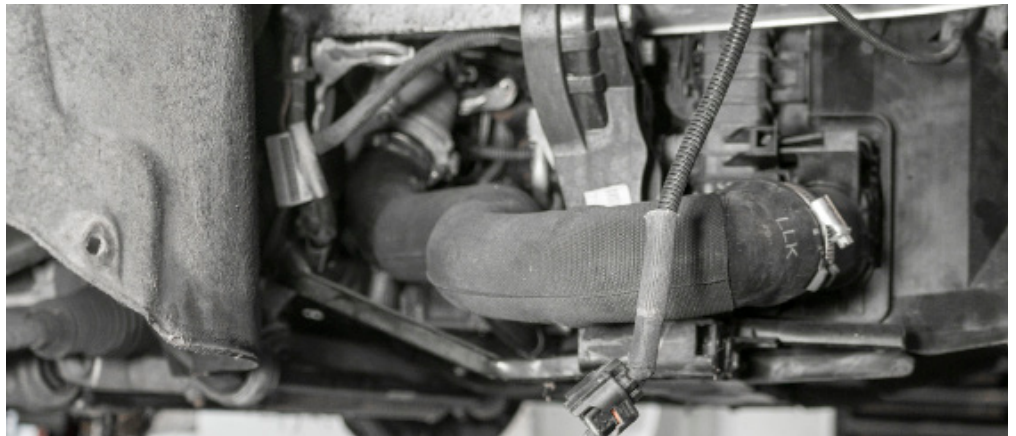
**STEP 10**

Remove the plastic trim attached to the crash bar.

Using a screw driver or pry tool carefully push the tabs outward to remove.

**STEP 11**

Disconnect the intercooler hoses from outlet and inlet.





**STEP 12 (OPTIONAL)**

**Sold separately**  
[CTS-HW-0199]

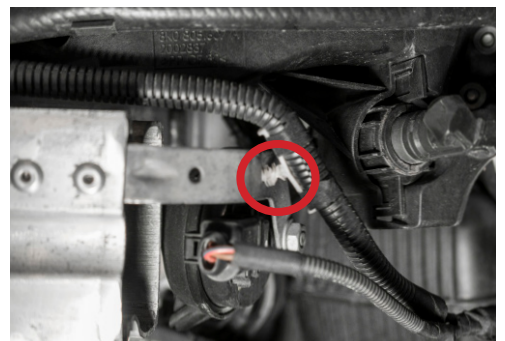
At this time we you may install the CTS turbo muffler delete if you purchased one.

If you do not have the turbo muffler delete you may skip this step.

**STEP 13**

Loosen the bolts holding the crash bar to the chassis.

Also, detach the wiring harness from the crash bar indicated.



**STEP 14**

Remove the crash bar.

**STEP 15**

Remove the intercooler.





**STEP 16**

Install the CTS intercooler.

Reinstall the crash bar.

**STEP 17**

You will need to mark and drill a 1/8 pilot hole to attach the provided brackets.





**STEP 17 Continued****STEP 18**

Install the hot side outlet hose.



**STEP 19**

Install the cold side inlet hose.

**STEP 20**

Reinstall back from Step 10.  
Check for leaks  
and test drive your  
vehicle.

You are done!

