



INSTALLATION GUIDE

CTS TURBO MERCEDES-BENZ AMG W205/M177 C63/63S
DOWNPIPES



WHAT IS INCLUDED

1. Downpipes
2. Hardware

NOTES

Vehicle used in this guide is a 2017 Mercedes-Benz C63S. Other cars will follow the same steps.

Always make sure the car is safe to work on. Do not work on a hot motor.

STEP 1

Remove air intake system.



STEP 2

Remove heat shields.



STEP 3

Remove the upper O2 sensors from both downpipes.



STEP 4

Remove the lower O2 sensors on both downpipes.

Make sure to mark which O2 sensors go where.



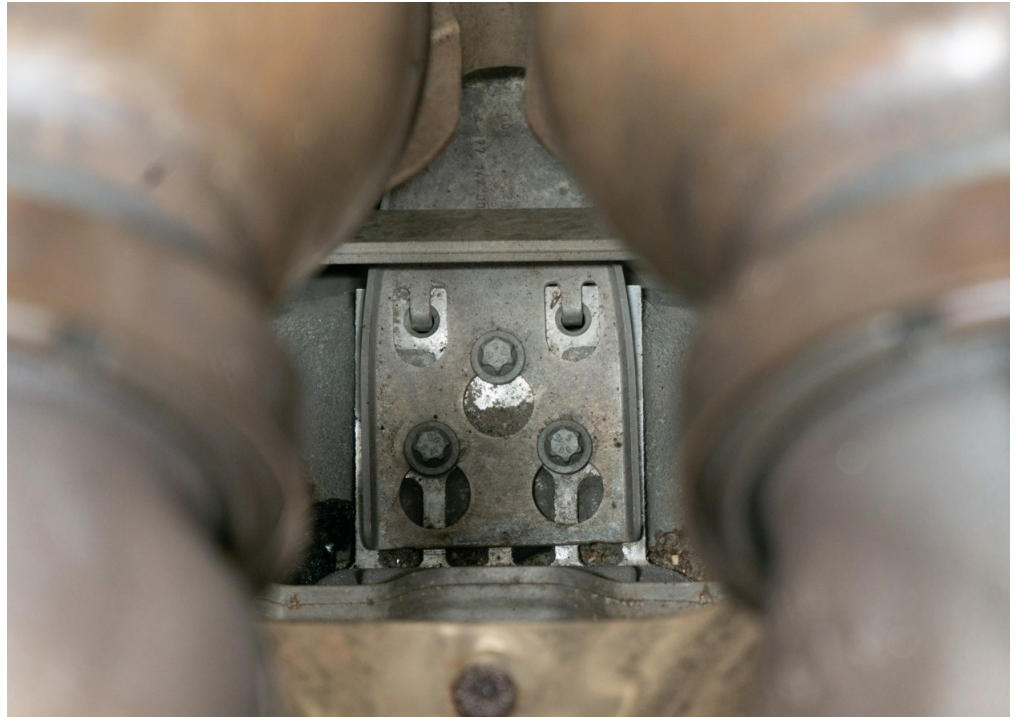
STEP 5

There are 2 bolts on each side securing the downpipes to a bracket that need to be removed.



STEP 6

Remove the bolts securing the 2 brackets to the motor.



STEP 8

On both sides you will need to cut the OEM downpipes where they meet the secondary cat.



STEP 9

Remove the V band clamps securing the downpipes to the turbos.

You can now remove the OEM downpipes.



STEP 10

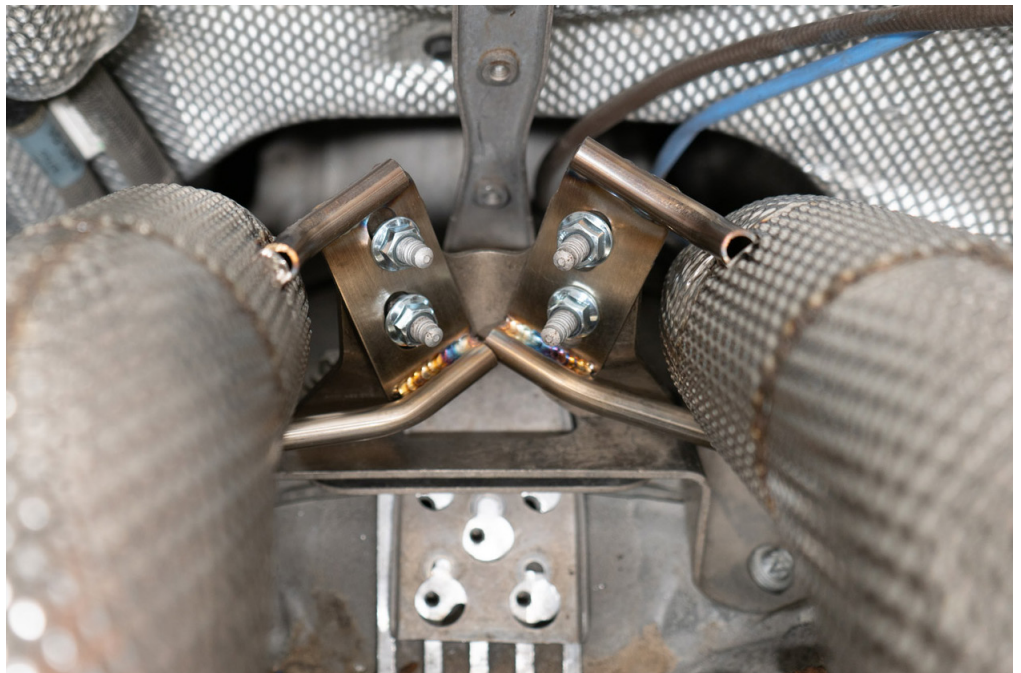
Install the CTS downpipes.

You can loosely reinstall the V band clamps.



STEP 11

Install OEM bolts and provided nuts. But do not fully tighten them just yet.

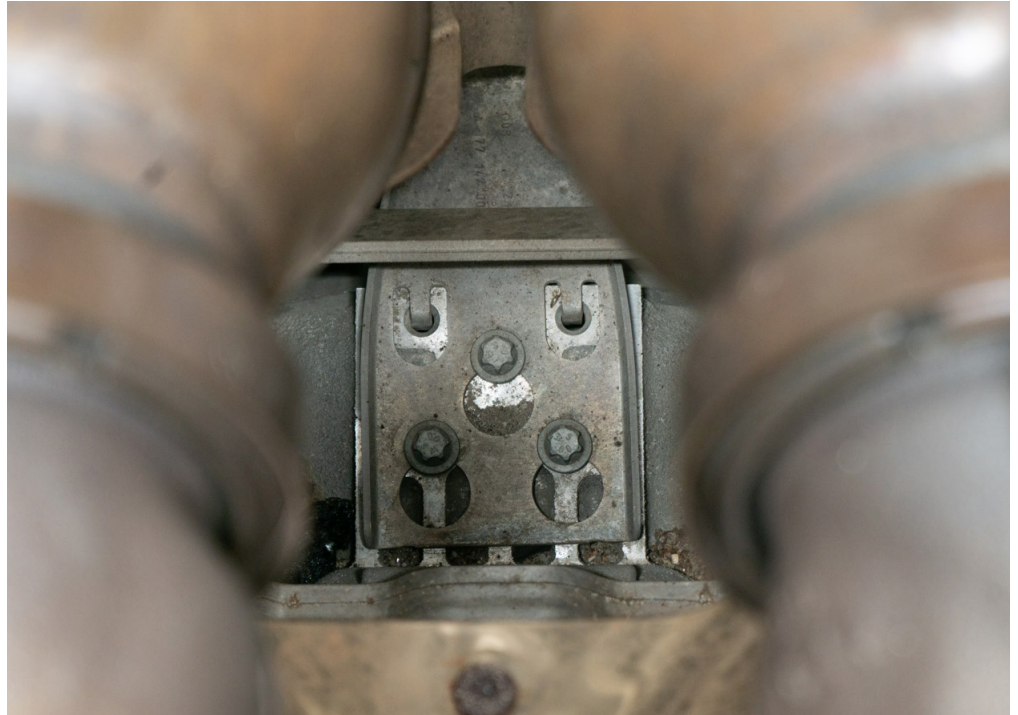


STEP 12

Reinstall the bracket bolts.

You can now ensure the downpipes are flush with the turbos and tighten down the V band clamps.

Fully tighten all bracket bolts at this time.



STEP 13

Install lower pipe with provided clamps on both sides.



STEP 12

Reinstall O2 sensors.

Reinstall heat shields and intake system and you are done!

