



FS Performance Engineering

Toyota Supra A90 /A91 Side Skirt Extensions (2 Piece) Installation Instructions

Tools Needed:

- Rivet gun / installation tool
- Pop Clip Remover
- Isopropyl alcohol + rag
- 7/64" Drill Bit
- Drill
- Phillip's Head Screwdriver
- Diagonal Cutters (if you have edge trim)

What's Supplied:

Aero:

(2) Pairs of 2-piece Side Skirts

- Front Left
- Rear Left
- Front Right
- Rear Right

Hardware:

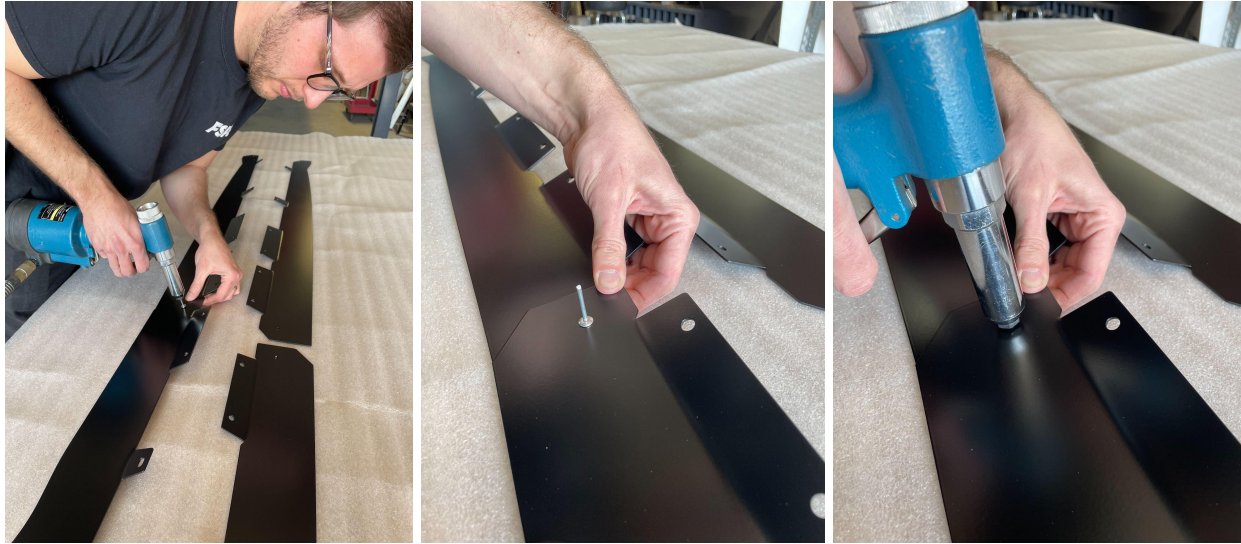
(1) Roll of Double Sided Tape (20')

(4) #8 x 1" body screws

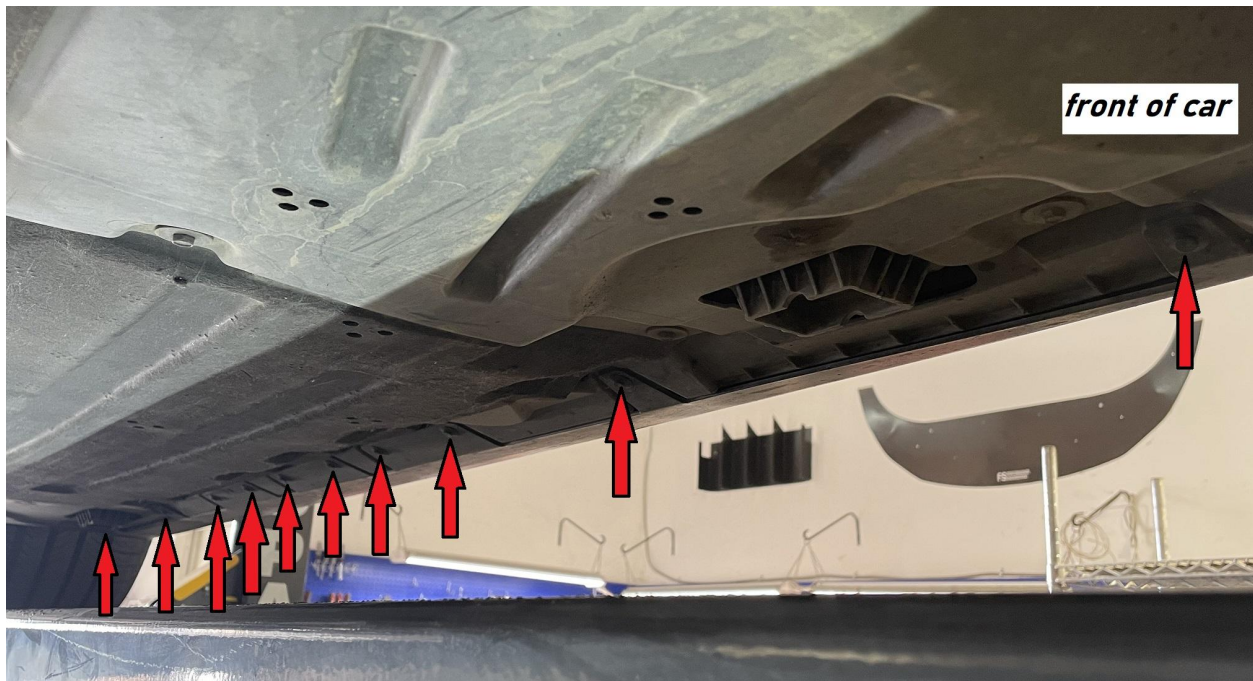
(4) Rivets (1/8" stem, 3/16" body, 1/2 body length) - 2 are extra

Steps:

- 1.) Begin by raising your car and placing it on jackstands, or the wheels on wheel risers.
- 2.) Use 2 rivets to assemble your side skirts (one for left, one for right). There are 4 pieces - front left, rear left, front right, and rear right. The rivets must be pointed downward when installed. We recommend placing the rear pieces on top of the front pieces. The folds are upward on the pieces.



- 3.) Start on one side of the car. Identify the 10 clips on the back side of the OEM rocker panel. They look like buttons. Remove all of them with your pop clip remover (our clips remover is metal - a flat head screwdriver likely will not work).





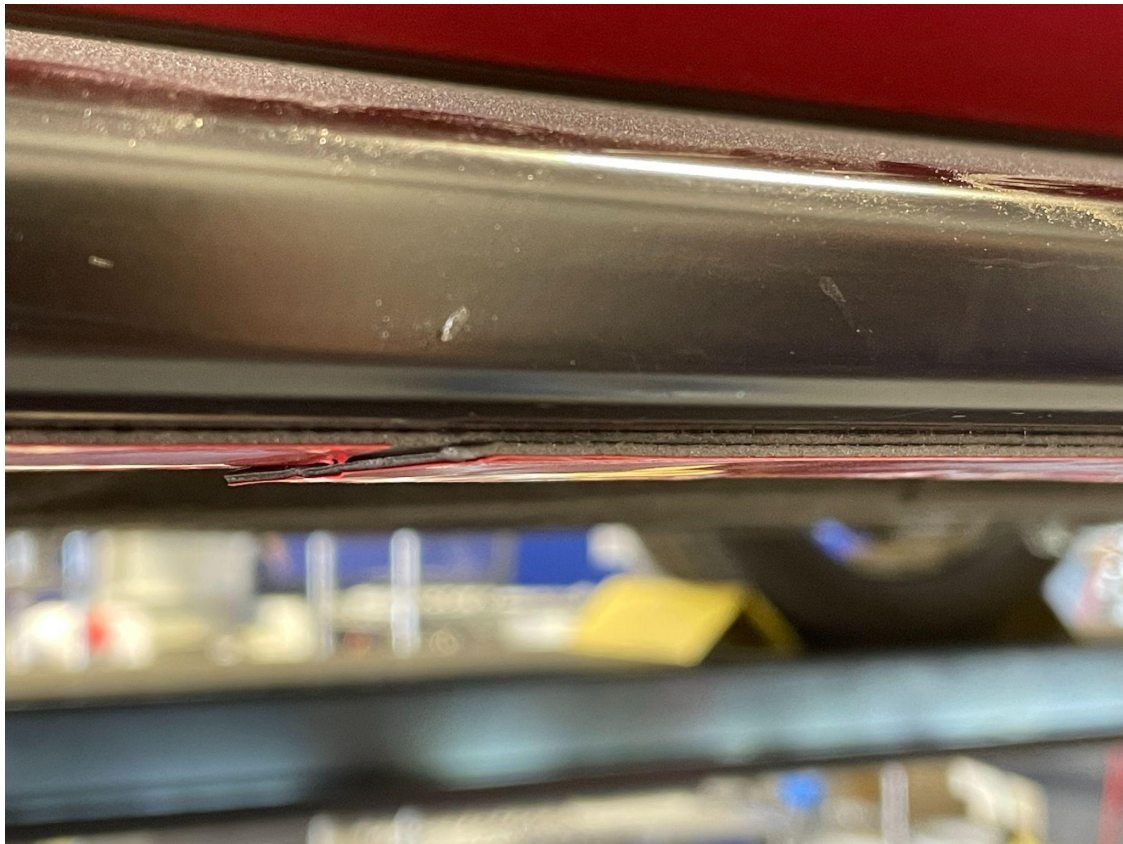


4.) Use your rag / isopropyl to thoroughly clean the entire underside of the OEM rocker panel.



5.) Apply a full line of double-sided tape to the entire length of the black OEM rocker panel underside. Feel free to apply a 2nd layer of double sided tape up to 41” from the front of the car to accommodate for the thickness gap created by the 2 layer skirts.

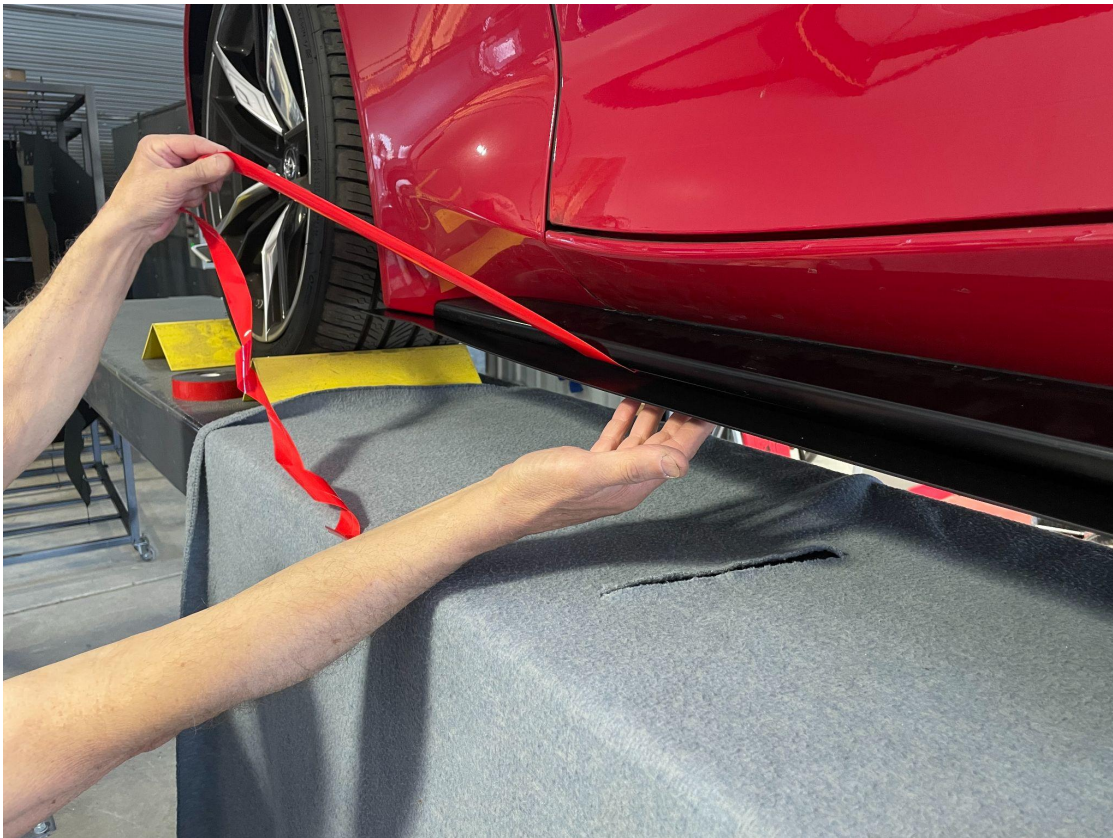






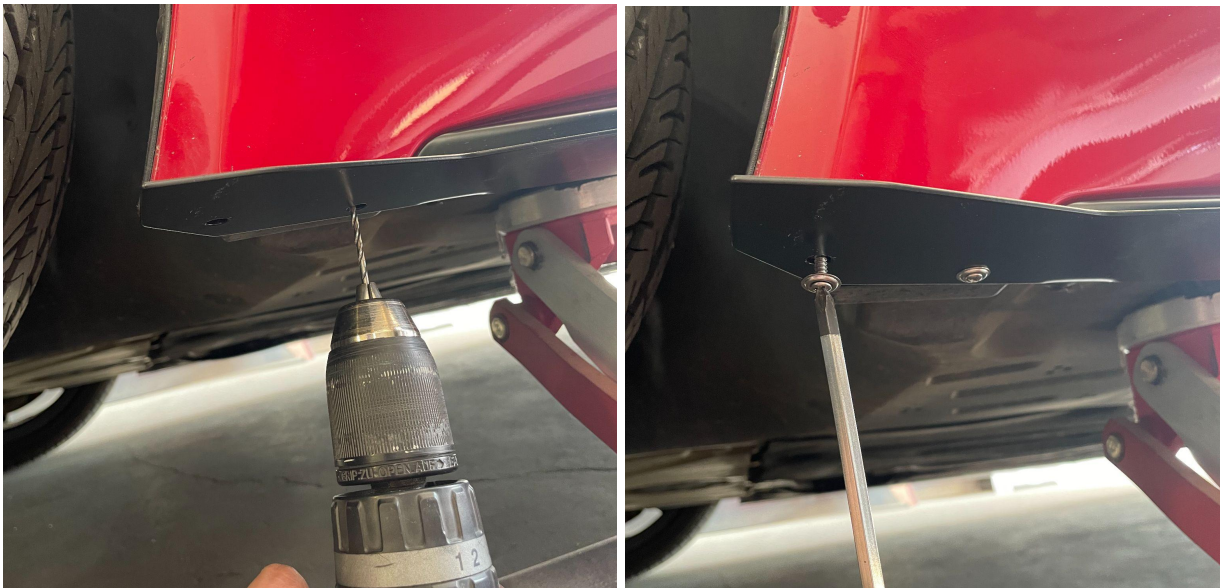
6.) Hold the side skirt up against the car and “pop” in the pop clips through the side skirt into the rocker panel. The holes will line up. Assure you push very hard against the rocker panel to allow full expansion of the clip through both pieces - it will be tough. Once this is done make sure the skirt is even with the back and front of the OEM rocker panel, you can peel away the double sided tape film and push the side skirt up against the tape. Hold firmly along all spots for 15-20 seconds each.







7.) Identify the 2 holes at the front of the side skirt. Drill through them into the car with a 7/64" drill bit - above them there are dimples in the car's body. Install the #8 screws with your phillip's head screwdriver.



8.) Repeat all of these steps on the other side of the car! If you have edge trim, prep the edge with isopropyl alcohol and apply it. Use a diagonal cutter to cut to size.



9.) Assure everything is secure, then enjoy your new FS Performance Engineering aero! Be sure to use #FSPerformanceEngineering in the online world.

For questions email costas@fspeinc.com Or call/text us at 1-661-809-0954.

